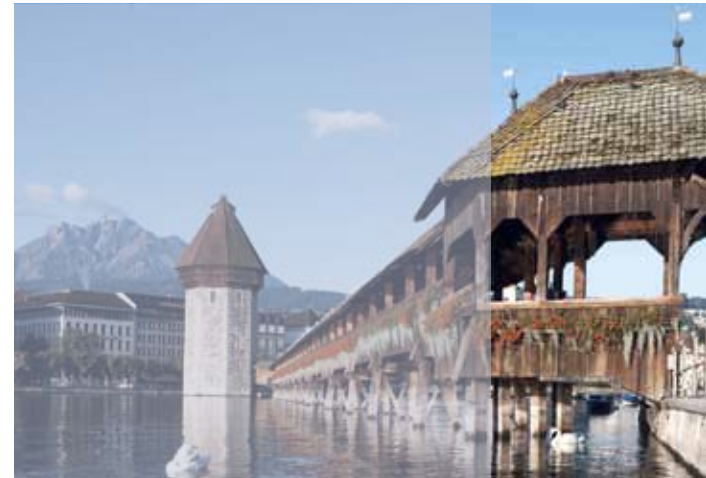
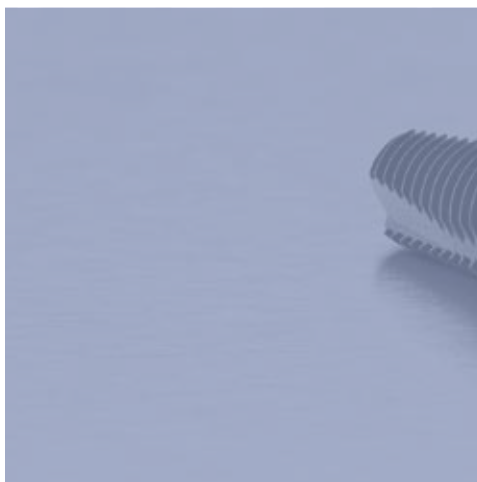
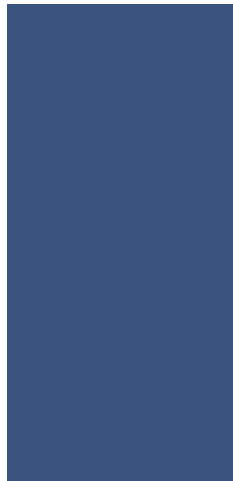


4<sup>TH</sup> INTERNATIONAL  
**CAMLOG CONGRESS**  
MAY 3<sup>RD</sup> – 5<sup>TH</sup>, 2012  
**LUCERNE, SWITZERLAND**



**camlog**foundation

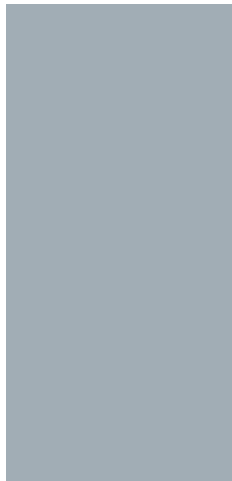
FEEL THE PULSE OF SCIENCE IN THE HEART OF SWITZERLAND



## TABLE OF CONTENTS

---

Foreword	5
Scientific Committee	7
Speakers & Chairmen	7
Program Overview	9
Friday Program	10
Saturday Program	11
Thursday Workshops	14
Poster Competition	16
CAMLOG Party	19
Partner Programs	20
Hotels	22
About Lucerne	24
Arrival	27
Registration, General Information, Links	29
Terms and Conditions	30
Registration Form	





## FOREWORD

---

Dear Sir or Madam,  
Dear Colleagues,

The motto for the 4<sup>th</sup> International CAMLOG Congress in Lucerne, Switzerland is **“Feel the pulse of science in the heart of Switzerland”**. The motto combines the setting with the program – we will introduce the latest developments in implant dentistry to our international guests of the Congress in “traditional Swiss surroundings”.

Technical progress has long been at home in Switzerland, a country that not only produces cheese, chocolate and watches in remarkable “Swiss made” quality, but is also otherwise well at the forefront technologically as recently demonstrated with the Gotthard Tunnel, the longest railway tunnel in the world.

And the Congress city of Lucerne lies in the heart of Switzerland both topographically and politically. From here to Rütliwiese, where the Swiss confederates supposedly took their legendary oath in 1291, the trip by paddle steamer takes about two hours. On the pages that follow, you will discover how we will reproduce what we call above “traditional Swiss surroundings” with the workshops of the Congress pre-program on Thursday, May 3<sup>rd</sup>.

During the Congress on May 4<sup>th</sup> and 5<sup>th</sup> in Lucerne, many well-known speakers from various disciplines will present a variety of topics, that

will expand your scientific interests and expertise on the one hand and on the other, directly contribute to further improving the clinical results of your daily practice. *Last but not least*, we should not forget to mention that the CAMLOG Party is on the program on the evening of the first regular day of the Congress at the unusual height of 1,600 meters above sea level at a sensational alpine location.

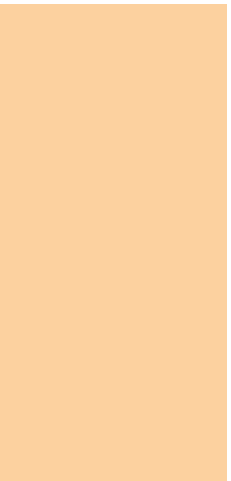
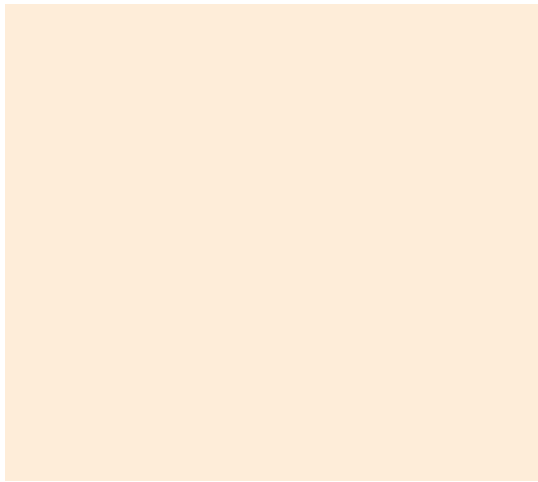
Dear Sir or Madam, dear Colleagues, we look forward to feeling the pulse of science in the heart of Switzerland together with you on the occasion of the 4<sup>th</sup> International CAMLOG Congress.

Best regards,

Prof Jürgen Becker  
Congress President

Jürg Eichenberger  
Chairman of the Board of Directors  
CAMLOG Holding AG



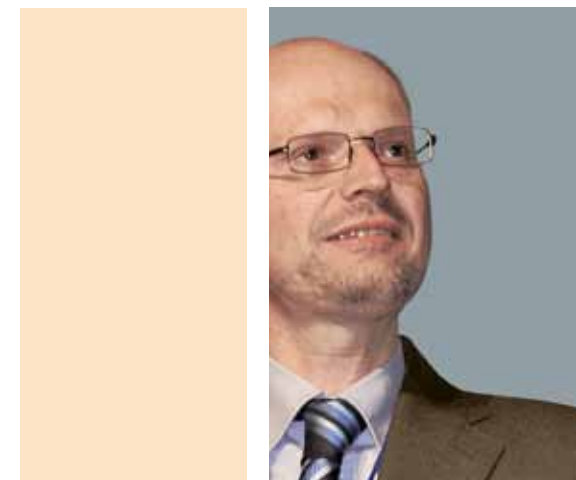


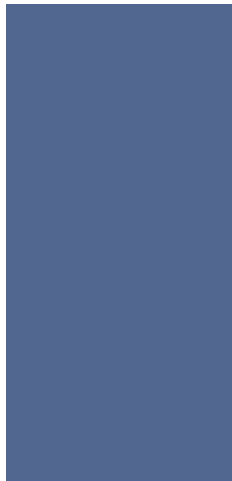
## SCIENTIFIC COMMITTEE

Prof Jürgen Becker	DE
Prof Fernando Guerra	PT
Prof Frank Schwarz	DE
Prof Thomas Taylor	US
Prof Hendrik Terheyden	DE
Prof Georg Watzek	AT
Prof Axel Zöllner	DE

## SPEAKERS & CHAIRMEN

Dr Karl-Ludwig Ackermann	DE	Prof Mariano Sanz Alonso	ES
Prof Gil Alcoforado	PT	Dr Markus Schlee	DE
Dr Thomas Barth	DE	Prof Alexander Schramm	DE
Prof Jürgen Becker	DE	Prof Frank Schwarz	DE
Dr S. Marcus Beschmidt	DE	Dr Pali Sipos	NL
Dr Florian Beuer	DE	Dr Michael Stimmelmayer	DE
Dr Claudio Cacaci	DE	Prof Thomas Taylor	US
Dr Luca Cordaro	IT	Prof Hendrik Terheyden	DE
Prof Rolf Ewers	AT	Dr Alex Yi-Min Tsai	TW
Dr Ilaria Franchini	IT	Prof Pascal Valentini	FR
Prof Fernando Guerra	PT	Prof Wilfried Wagner	DE
Dr Arndt Happe	DE	Dr Beat Wallkamm	CH
Dr Sönke Harder	DE	Dr Gary Warburton	US
Dr Detlef Hildebrand	DE	Prof Fumihiko Watanabe	JP
Dr Axel Kirsch	DE	Prof Georg Watzek	AT
Dr Steffen Kistler	DE	Prof Stefan Wolfart	DE
Prof Gerald Krennmair	AT	Prof Axel Zöllner	DE
Dr Gerhard Iglhaut	DE		
Dr Pierre Magnin	CH		
Dr Ralf Masur	DE		
Dr Katja Nelson	DE		
ZT M Gerhard Neuendorff	DE		
Dr Eric Normand	FR		
Dr Peter Randelzhofer	DE		
Prof Giulio Rasperini	IT		





## PROGRAM OVERVIEW

---

### PRE-PROGRAM

THURSDAY, MAY 3<sup>RD</sup>

---

#### WORKSHOP I

Various approaches in soft-tissue handling

#### WORKSHOP II

Soft-tissue management: Tips & tricks & latest trends

#### WORKSHOP III

Requirements for optimal soft-tissue conditioning

#### WORKSHOP IV

The perfected art of soft-tissue management

More information is available on pages 14–15.  
Separate registration required.

### CONGRESS PROGRAM: FEEL THE PULSE OF SCIENCE IN THE HEART OF SWITZERLAND

FRIDAY, MAY 4<sup>TH</sup>

---

#### SESSION I

Implant-abutment connections

#### SESSION II

Clinical experience with platform switching

#### SESSION III

Clinical experience and long-term results

#### CAMLOG PARTY

Let's rock the Alps!

More information is available on pages 10 and 19.

SATURDAY, MAY 5<sup>TH</sup>

---

#### SESSION I

Aging patients

#### SESSION II

Digital dentistry

#### SESSION III

CAMLOG Foundation research award ceremonies

#### SESSION IV

Meet the experts: Panel discussion

More information is available on pages 11, 16 and 17.

## PROGRAM – FRIDAY, MAY 4<sup>TH</sup>, 2012

TIME	TOPIC	SPEAKER		TIME	TOPIC	SPEAKER	
08:30 a.m.	Musical prelude						
08:45 a.m.	Welcome and report of the CAMLOG Foundation	J. Becker	DE				
09:00 a.m.	Challenges in oral implantology	T. Taylor	US				
<b>SESSION I</b>	<b>IMPLANT-ABUTMENT CONNECTIONS</b>			<b>SESSION III</b>	<b>CLINICAL EXPERIENCE AND LONG-TERM RESULTS</b>		
	<b>MODERATOR: G. WATZEK</b>				<b>MODERATOR: R. EWERS</b>		
09:30 a.m.	Impact of implant-abutment connections on changes in the crestal bone level	F. Schwarz	DE	02:15 p.m.	Long-term results and clinical experience with new developments	W. Wagner	DE
10:00 a.m.	Implant-abutment connection: Flat or conical?	K. Nelson	DE	02:45 p.m.	10-year findings: Scientific evidence of augmentation techniques	H. Terheyden	DE
10:15 a.m.	Tightness of implant-abutment connections: Conical vs. flat	S. Harder	DE	03:15 p.m.	Impact of implant design and surgical procedures on periimplant tissue development	M. Sanz	ES
10:30 a.m.	Discussion			03:45 p.m.	Soft tissue: What, when, how much and how long?	G. Rasperini	IT
<b>10:45 A.M.</b>	<b>COFFEE BREAK</b>			04:15 p.m.	Discussion		
				04:30 p.m.	End of the first day		
<b>SESSION II</b>	<b>CLINICAL EXPERIENCE WITH PLATFORM SWITCHING</b>			<b>06:00 P.M.</b>	<b>CAMLOG Party "Let's rock the Alps!"</b>		
	<b>MODERATOR: T. BARTH</b>						
11:15 a.m.	Platform switching and standard platform procedures	F. Guerra	PT				
11:45 a.m.	Clinical experience with the CONELOG® Implant System	M. Schlee	DE				
12:15 p.m.	Clinical experience with the CAMLOG® Implant System	P. Sipos	NL				
12:45 p.m.	Discussion						
<b>01:00 P.M.</b>	<b>LUNCH</b>						
					<b>PLEASE, ALSO VISIT OUR INDUSTRY AND POSTER EXHIBITION</b>		

## PROGRAM – SATURDAY, MAY 5<sup>TH</sup>, 2012

TIME	TOPIC	SPEAKER		TIME	TOPIC	SPEAKER	
<b>SESSION I</b>	<b>AGING PATIENTS</b>			<b>SESSION III</b>	<b>CAMLOG FOUNDATION RESEARCH AWARD CEREMONIES</b>		
	<b>MODERATOR: S. WOLFART</b>				<b>MODERATOR: F. GUERRA</b>		
09:00 a.m.	The impact of bisphosphonate treatments on implant therapy	G. Warburton	US	02:15 p.m.	CAMLOG Foundation research prize		
09:30 a.m.	How can treatment of edentulous elder patients be simplified?	L. Cordaro	IT	02:50 p.m.	CAMLOG Foundation poster award		
10:00 a.m.	Aging patients: Prosthetic treatment concepts – ball abutment vs. Locator® vs. bar vs. telescope	G. Krennmair	AT		Surprise presentation		
10:30 a.m.	The precision of computer-assisted implantation in clinical practice	A. Schramm	DE	<b>SESSION IV</b>	<b>MEET THE EXPERTS: PANEL DISCUSSION</b>		
11:00 a.m.	Discussion				<b>MODERATION: K.-L. ACKERMANN/G. ALCOFORADO/A. ZÖLLNER</b>		
<b>11:15 A.M.</b>	<b>COFFEE BREAK</b>			03:15 p.m.	The compromised patient	I. Franchini	IT
<b>SESSION II</b>	<b>DIGITAL DENTISTRY</b>				The demanding patient	R. Masur	DE
	<b>MODERATOR: F. WATANABE</b>				The complicated case	A. Happe	DE
11:45 a.m.	Digital dentistry meets implant dentistry	F. Beuer	DE		<b>EXPERTS:</b>	M. Beschnidt	DE
12:10 p.m.	Esthetic restorations with zirconium abutments: Clinical and material aspects	M. Stimmelmayer	DE			S. Kistler	DE
12:35 p.m.	CAD/CAM: What is possible today? Where are the difficulties?	G. Neuendorff	DE			E. Normand	FR
01:00 p.m.	Discussion					A. Tsai	TW
<b>01:15 P.M.</b>	<b>LUNCH</b>					P. Valentini	FR
				04:45 p.m.	Closing remarks	J. Becker	DE
				05:00 p.m.	End of the 4 <sup>th</sup> International CAMLOG Congress 2012		







## WORKSHOPS – THURSDAY

**Exceptional workshops in an exclusive setting.** You can expect a first Congress highlight during the workshops on Thursday. A shuttle bus will take you from Lucerne Central station to Alpnachstad. From there, you will ascend on the world's steepest cogwheel train\* to Pilatus-Kulm at 2,132 meters above sea level. Up there, alpine pastures, mountain streams, rocky cliffs and who knows, perhaps even ibexes and chamois, alpine roses and gentians will be awaiting you. And, of course, the breathtaking panoramic view of the lakes of central Switzerland and the Alps with 73 peaks. You will be just as excited about the workshop accommodations as about the contents and competent speakers of the workshop. After the workshop, you will take a gondola and cable car down to Kriens and from there, take the bus back to Lucerne. Be prepared for an unforgettable day!

**Date:** Thursday, May 3<sup>rd</sup>, 2012

**Time:** 9:00 a.m. – 5:30 p.m.

**Place:** Hotel Pilatus-Kulm

**Price:** € 190.– incl. transfers, catering, materials

**Participants:** Max. 40 persons per workshop

**Language:** The workshops will not be translated into other languages.

\* Subject to delays due to weather. If delayed, travel to Pilatus-Kulm will be identical to the return trip.

## PROGRAM SEQUENCE

---

- 09:00 a.m. Departure of shuttle bus from Lucerne Central station
- 09:15 a.m. Arrival in Alpnachstad
- 09:30 a.m. Travel by cogwheel train to the Pilatus
- 10:30 a.m. Arrival at the Pilatus and registration
- 11:00 a.m. Start of the workshops (incl. lunch)
- 03:30 p.m. End of the workshops, aperitif
- 04:00 p.m. Decent by cable car to Kriens
- 05:00 p.m. Arrival in Kriens and shuttle bus to Lucerne
- 05:30 p.m. Arrival at Lucerne Central station

Geistlich  
Biomaterials

WEGMANN  
An Spital für Chirurgie und Strahlentherapie

IGI  
HELRIC ZEPP  
MEDIZINTECHNIK GMBH

stoma®

Hu-Friedy

karrdental

## WORKSHOPS

---

### WORKSHOP I English

---

#### Various approaches in soft-tissue handling

Workshop with hands-on exercises on pig jaws

- A. Kirsch, DE
- D. Hildebrand, DE

### WORKSHOP II English

---

#### Soft-tissue management: tips & tricks & latest trends

Workshop with hands-on exercises on pig jaws

- C. Cacaci, DE
- P. Randelzhofer, DE

### WORKSHOP III German

---

#### Requirements for optimal soft-tissue conditioning

Workshop with hands-on exercises on pig jaws

- B. Wallkamm, CH
- P. Magnin, CH

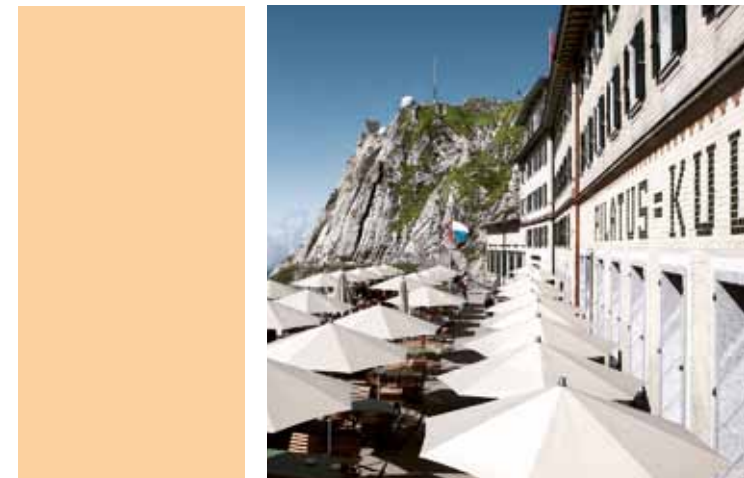
### WORKSHOP IV German

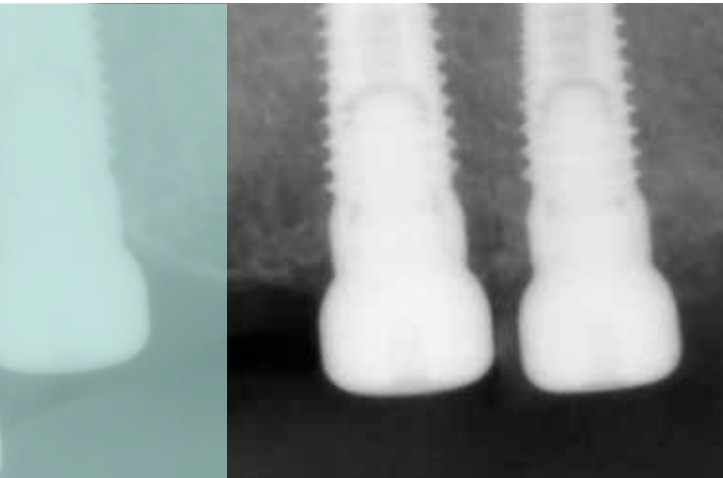
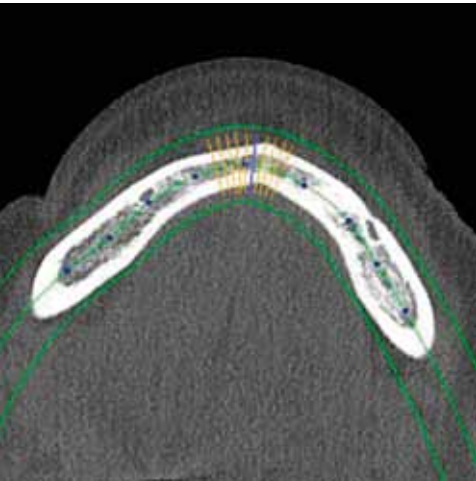
---

#### The perfected art of soft-tissue management

Workshop with hands-on exercises on pig jaws

- G. Iglhaut, DE
- M. Stimmelmayr, DE





## POSTER COMPETITION

---

### APPROACH AND OBJECTIVES

---

As part of the poster competition at the 4<sup>th</sup> International CAMLOG Congress, high-quality research, clinical studies and case documentation, as well as dental procedures will be presented.

The posters should use text, graphics, illustrations and photos to represent knowledge of practical interest for implant dentistry.

### POSTER REGISTRATION

---

To register a poster, e-mail an abstract **by January 17<sup>th</sup>, 2012** to [poster@camlogfoundation.org](mailto:poster@camlogfoundation.org) (Subject: Poster ICC 2012). The abstract must be authored in English and may be up to 150 words in length. The scientific committee will evaluate all abstracts submitted on time. The authors will be notified of acceptance by e-mail.

Accepted posters must be registered on site at the special poster registration desk and submitted on CD-ROM with a PDF file of the poster.

### AWARD CEREMONY

---

A jury will evaluate the exhibited posters. The three best posters will receive a **cash prize in the amount of:**

**CHF 2,000 for 1<sup>st</sup> place**  
**CHF 1,500 for 2<sup>nd</sup> place**  
**CHF 1,000 for 3<sup>rd</sup> place.**

In addition, the winner will have the opportunity to briefly present his/her poster as part of the award ceremony before the plenary session on Saturday, May 5<sup>th</sup>, 2012.

### PUBLICATION

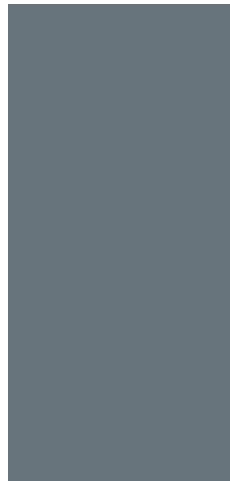
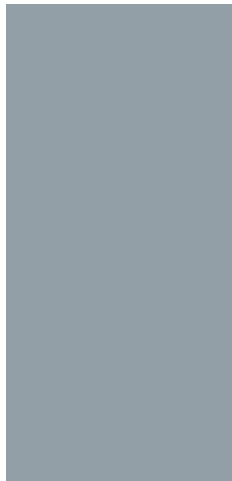
---

Participants agree that the registered poster may be published as a PDF file on the CAMLOG FOUNDATION ([www.camlogfoundation.org](http://www.camlogfoundation.org)) website after the Congress.

### PRESENTATION

---

The poster exhibition will be open throughout the Congress. Authors are asked to stay with their posters during the coffee and lunch breaks on Friday.



---

## SPECIFICATIONS

---

**Language:** English

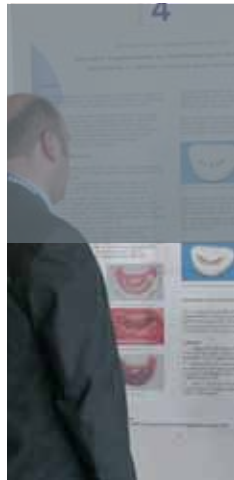
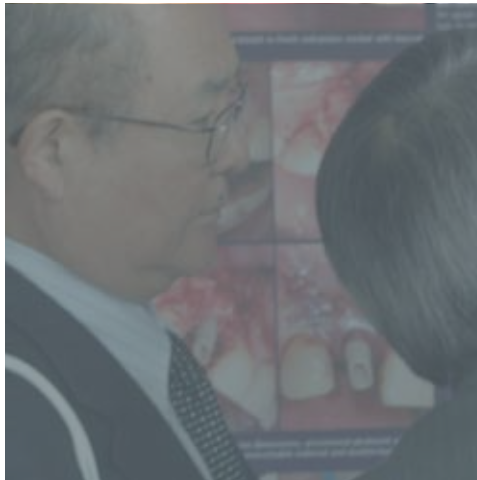
**Size:** Portrait: width 90 cm, height 128 cm; the poster must not exceed this size. Posters will not be presented if they do not comply with the requirements.

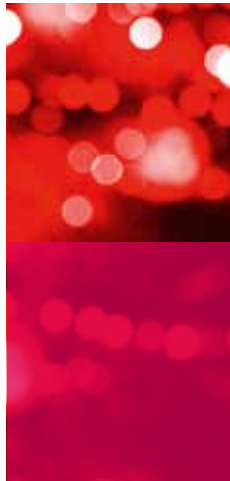
**Title:** Title at the top of the poster, first letter of each word capitalized.

**Authors:** List authors in capital letters, FAMILY NAME, INITIALS. Listing of the institution, department, city, country. Mark the name of the presenter with an asterisk (\*).

**Address:** Mr, Ms/Academic Title/First Name/Last Name/Address/ City/ZIP/Country/Phone no./Fax no./E-mail address.

**Abstract:** Description of the problem, methods and materials or procedures in the study or documentation, as well as the results and conclusions (incl. summary of statistical data).



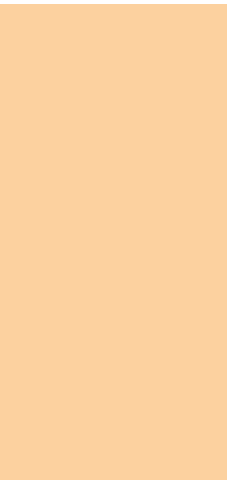




## CAMLOG PARTY – FRIDAY

---

Get ready for an amazing evening on Friday! Experience Switzerland in all its fascinating aspects. Cross Lake Lucerne by boat, then ascend by cogwheel train to more than 1,600 m to Rigi, the "Queen of Lucerne mountains". Once there, a sensational view awaits you and pure Swiss tradition: alphorns, banner swingers, cheese, chocolate... and of course, lots of entertainment, music and fun. Revel into the night until returning on Europe's first mountain railway into the valley and then from there by bus back to Lucerne.



**Start:** 6:00 p.m. in Lucerne

---

More information will be provided after your registration.

**The number of participants is limited. We recommend that you register early. Participants will be registered on a first-come, first-served basis.**





## PARTNER PROGRAMS

### GLASI HERGISWIL



You will travel by boat on Lake Lucerne to Glasi Hergiswil. Once there, you will start at the Glasi Bar on the Lake with an aperitif and "Hüttenchefplatte" (traditional sausage & cheese plate with bread). The Glasi Hergiswil is the only glassworks in Switzerland still shaping the glass by mouth and hand into contemporary and unique designs. You can watch the glassblowers work, visit the museum or purchase one or another work of art directly. The only glass maze in Switzerland was opened here in June 2010. Be enchanted by the fragile world of glass.

**Price:** € 40.– per person  
(incl. tour, meal, transfers, entrance)

**Date:** Friday, May 4<sup>th</sup>, 2012, **Time:** 9:30 a.m. to approx. 3:00 p.m.

**Languages:** German and English



### "FAÇADES TELL STORIES" GUIDED CITY WALK

Façades tell fascinating stories of customs, festivals and people. With fresh eyes, take a stroll past the buildings and let your city guide tell you about the origin of the paintings as well as the history of the artists and homeowners. The tour covers everything from monochromatic techniques to American-style street art, from Seraphin Weingartner to Hans Erni as well as the campaign to keep Lucerne's buildings free of vandalism.



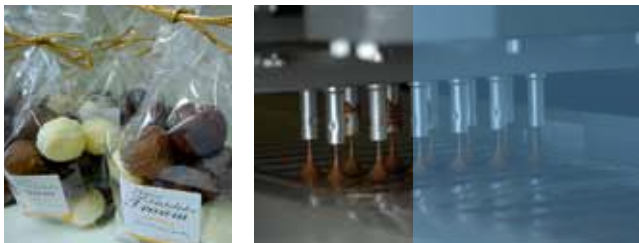
**Price:** € 20.– per person  
(incl. tour)

**Date:** Friday, May 4<sup>th</sup>, 2012, **Time:** 10:00 a.m. to approx. 12:00 p.m.

**Languages:** German and English



## THE SWEET TEMPTATION



Have you ever asked yourself how chocolate gets its many forms? Switzerland is world-renowned for its chocolate specialties. After an exciting tour of Lucerne, explore the secrets of chocolate processing and follow the individual steps of production from casting to packaging and assembly. Of course, nibbling is always allowed! At the on-site shop, you can then buy chocolate specialties as a souvenir of your time there.

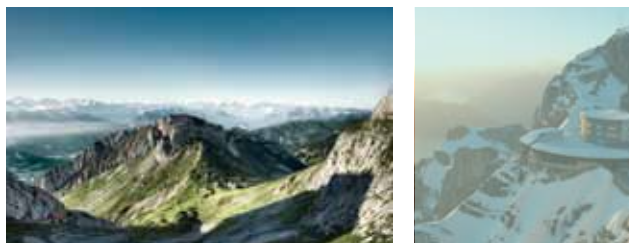
**Price:** € 20.– per person  
(incl. tour, transfers)

**Date:** Friday, May 4<sup>th</sup>, 2012, **Time:** 10:00 a.m. to approx. 1:00 p.m.

**Languages:** German and English

## PILATUS – GOLDEN ROUNTRIP

Lucerne's "own" mountain has so many stunning sides. On the Golden Roundtrip, experience everything: Lake Lucerne to Alpnachstad, the steepest cogwheel train in the world to Pilatus Kulm (2,132 m above sea level) and the unique alpine flora and fauna up there. The local specialties of the Pilatus gastronomy rejuvenate you in a 3-course meal for the trip by cable car down to Kriens from where you will return to Lucerne by bus.

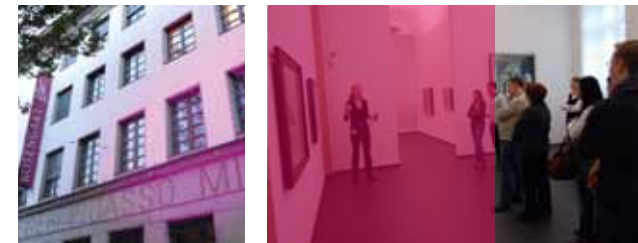


**Price:** € 80.– per person  
(incl. tour, tickets, lunch, bus transfer)

**Date:** Saturday, May 5<sup>th</sup>, 2012, **Time:** 10:00 a.m. to approx. 4:00 p.m.

**Languages:** German and English

## CITY WALK WITH ROSENGART COLLECTION LUCERNE



The Rosengart Collection owes its importance to both the unique creative works of Paul Klee and Pablo Picasso. While the incomparable Paul Klee collection of 125 paintings, water-colors and drawings documents every period of the artist's creative work, the collection of Picasso paintings concentrates on Picasso's creativity after 1938. In addition, there is a whole series of important pictures and drawings by more than 20 world-famous masters of the 19<sup>th</sup> and 20<sup>th</sup> centuries (including Cézanne, Monet, Matisse, Miró) on display.

**Price:** € 20.– per person  
(incl. tour, entrance)

**Date:** Saturday, May 5<sup>th</sup>, 2012, **Time:** 10:00 a.m. to approx. 1:00 p.m.

**Languages:** German and English

## HOTELS

### PALACE HOTEL \*\*\*\*\*



Directly on the lakeshore promenade with sensational views. The hotel offers you the best of more than a century of history. Full of light, in harmonious colors and exceptional materials, the rooms testify of the claim of passionate attention to detail.

#### Location

1.4 km to KKL

**Single room** CHF 420.– / € 323.–<sup>1</sup>

**Double room** CHF 560.– / € 431.–<sup>1</sup>

per room / night including breakfast

[www.palace-luzern.ch](http://www.palace-luzern.ch)

### HOTEL SCHWEIZERHOF \*\*\*\*\*

The hotel is prominently situated in a central location. Experience a historical hotel with historic decor and family tradition. A luxury hotel with history, but an ultra-modern infrastructure and a high aspiration to provide a home away from home for people who are accustomed to excellence.



#### Location

700 m to KKL

**Single room** CHF 415.– / € 320.–<sup>1</sup>

**Double room** CHF 580.– / € 446.–<sup>1</sup>

per room / night including breakfast

[www.schweizerhof-luzern.ch](http://www.schweizerhof-luzern.ch)

### HOTEL ASTORIA \*\*\*\*



Genuine hospitality and professional service – the Hotel Astoria offers you what you expect from a modern hotel. Bright rooms and tasteful design make the unusual architecture into a very attractive hotel in the heart of the city.

#### Location

700 m to KKL

**Single room** CHF 290.– / € 223.–<sup>1</sup>

**Double room** CHF 350.– / € 269.–<sup>1</sup>

per room / night including breakfast

[www.astoria-luzern.ch](http://www.astoria-luzern.ch)

### GRAND HOTEL EUROPE \*\*\*\*\*

The hotel is located near the lake. Built in 1872, it combines a grand past with a contemporary outlook and is distinguished by its subtle elegance, attentive service and warm hospitality.



#### Location

1.8 km to KKL

**Single room** CHF 280.– / € 215.–<sup>1</sup>

**Double room** CHF 340.– / € 261.–<sup>1</sup>

per room / night including breakfast

[www.europe-luzern.ch](http://www.europe-luzern.ch)

<sup>1</sup> Underlying exchange rate: CHF 1 = € 0.77 (subject to change, Euro prices rounded and only for comparison. Hotel accommodations will be charged in the indicated CHF amounts)

---

### HOTEL CONTINENTAL-PARK \*\*\*\*



The Hotel Continental-Park is a modern family-owned company characterized by personal commitment. The hotel has its own underground parking lot, air-conditioning and free WiFi. It is directly across from the Central station next to the city park.

---

#### Location

600 m to KKL

**Single room** CHF 250.- / € 192.-<sup>1</sup>

**Double room** CHF 330.- / € 254.-<sup>1</sup>

per room/night including breakfast

[www.continental.ch](http://www.continental.ch)

---



---

### BEST WESTERN HOTEL ROTHHAUS \*\*\*

The hotel is centrally located on a quiet side street on the edge of Lucerne's old town. It is easily reached with all means of transportation and is only a few steps from the sights. The hotel guarantees a pleasant atmosphere and a nice stay.



---

#### Location

1 km to KKL

**Single room** CHF 183.- / € 141.-<sup>1</sup>

**Double room** CHF 240.- / € 185.-<sup>1</sup>

per room/night including breakfast

[www.rothaus.ch](http://www.rothaus.ch)

---



---

### HOTEL AMBASSADOR & DE LA PAIX \*\*\*



The Hotel Ambassador is in the heart of Lucerne. Rest and relax in the friendly, quiet rooms. The modern, well-maintained infrastructure provides the comfort expected of a modern city hotel.

---

#### Location

1 km to KKL

**Single room** CHF 192.- / € 148.-<sup>1</sup>

**Double room** CHF 242.- / € 186.-<sup>1</sup>

per room/night including breakfast

[www.de-la-paix.ch](http://www.de-la-paix.ch)

---



---

### HOTEL DREI KÖNIGE \*\*\*

Situated in the heart of Lucerne, the Hotel Drei Könige offers spacious and comfortable rooms with all the amenities of a three-star hotel. The quiet location and the uniqueness of the Art Nouveau building make your stay a special experience.



---

#### Location

1 km to KKL

**Single room** CHF 176.- / € 135.-<sup>1</sup>

**Doppelzimmer** CHF 220.- / € 169.-<sup>1</sup>

per room/night including breakfast

[www.drei-koenige.ch](http://www.drei-koenige.ch)

---





## ABOUT LUZERN

---

LUCERNE HAS A CENTRAL EUROPEAN CONTINENTAL CLIMATE. THE CITY HAS ABOUT 60,000 RESIDENTS, LIES IN THE HEART OF SWITZERLAND AT 434 METERS ABOVE SEA LEVEL AND IS AN ATTRACTIVE RESIDENTIAL AND LIVING ENVIRONMENT BECAUSE OF ITS PROXIMITY TO THE ECONOMIC CENTERS OF SWITZERLAND.

### LUCERNE – THE CITY. THE LAKE. THE MOUNTAINS.

---

Lucerne is Switzerland in a nutshell. Whatever you expect from a unique city, Lucerne will not disappoint you. The avant-garde in the form of the futuristic Culture & Convention Center Lucerne (KKL) designed by Jean Nouvel is just as at home here as historic sights, which have survived for centuries. The museums, theaters and festivals make Lucerne a city of culture, which elegantly holds its own among traditions and trends. Immerse yourself in this city, enjoy the magnificent scenery, stroll along the docks and don't be surprised if you never want to leave. Lucerne's charm is legendary. Welcome.

### SHOPPING

---

Stroll through the narrow alleys on to the light-flooded squares and enjoy the diversity of the many shops Lucerne has to offer. The selection is exquisite and

meets every demand. Lucerne offers typical world-renowned Swiss watch and jewelry brands, exquisite and attractive fashion accessories. And the famous Swiss chocolate will melt you. Relax after shopping in one of the many cafes or restaurants and take joy in knowing that you don't have to carry your purchases far. In Lucerne, the distances are short and even free of traffic in the old town.

### ESSENCE OF SWITZERLAND

---

Lucerne is the gateway to a very special place on earth: the adventure region of Lake Lucerne, "Schweiz en miniature" (Switzerland in a nutshell). Nowhere else can you find so much Switzerland in such a small space; Lake Lucerne is home to Europe's largest inland fleet, the steepest cogwheel railway up Pilatus offers a 360-degree panorama of the Alps and the UNESCO Biosphere Entlebuch is full of fascinating nature. Discover the heart of Switzerland from Lucerne.

## LUCERNE MAP

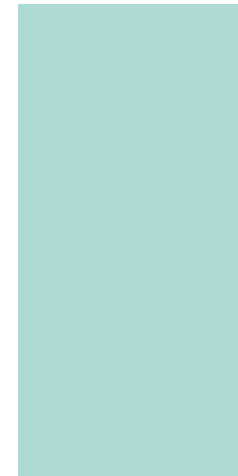


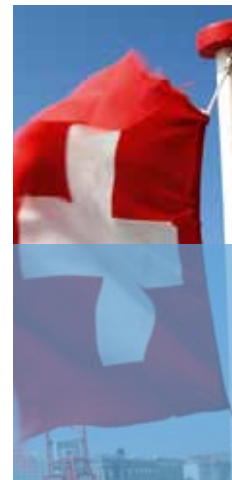
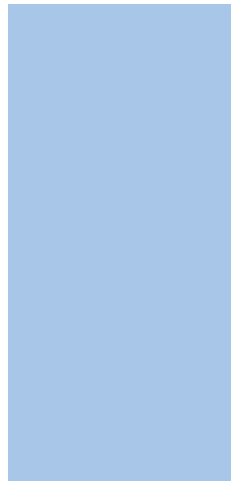
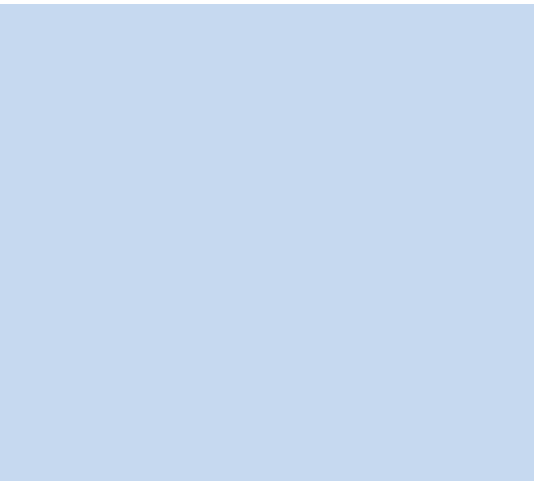
KKL CULTURE AND CONGRESS CENTER

HB CENTRAL STATION

P MULTI-STOREY PARKING LOTS

- 1 HOTEL PALACE
- 2 HOTEL SCHWEIZERHOF
- 3 HOTEL ASTORIA
- 4 GRAND HOTEL EUROPE
- 5 HOTEL CONTINENTAL PARK
- 6 BEST WESTERN HOTEL ROTH AUS
- 7 HOTEL AMBASSADOR & DE LA PAIX
- 8 HOTEL DREI KÖNIGE





## GETTING TO LUCERNE

### BY PLANE

The two airports of Zurich and Basel are the international gateways to Switzerland and the Alps. With over 27 million passengers and 350,000 flights a year, the two airports are among the most important and most attractive hubs in Central Europe. There is a train station directly under Zurich Airport, from which trains regularly depart to the larger cities. Thus, the onward journey to Lucerne turns out to be fast and convenient. Of course, rental cars are also available at the airport.

#### Examples of flight travel times

Milan – Zurich	1 hour
Paris – Basel	1 hour
Vienna – Zurich	1 hour, 15 minutes
Amsterdam – Basel	1 hour, 15 minutes
Berlin – Zurich	1 hour, 15 minutes
London – Basel	1 hour, 15 minutes
Madrid – Zurich	2 hours, 15 minutes

### BY TRAIN

Lucerne is situated on the international north-south rail connection. The Central station is located in the center of the city, directly next to the KKL. Most hotels are just a few minutes away by foot or bus. Fast trains run every half hour between Lucerne and the Zurich, Geneva and Basel airports. The transfer time from Zurich and Basel to Lucerne is around an hour by train.

[www.sbb.ch](http://www.sbb.ch)

#### Examples of train travel times

Basel – Lucerne	1 hour
Zurich – Lucerne	1 hour
Bern – Lucerne	1 hour
Geneva – Lucerne	3 hours
Milan – Lucerne	3 hours, 30 minutes
Stuttgart – Lucerne	4 hours
Frankfurt – Lucerne	4 hours

### BY CAR

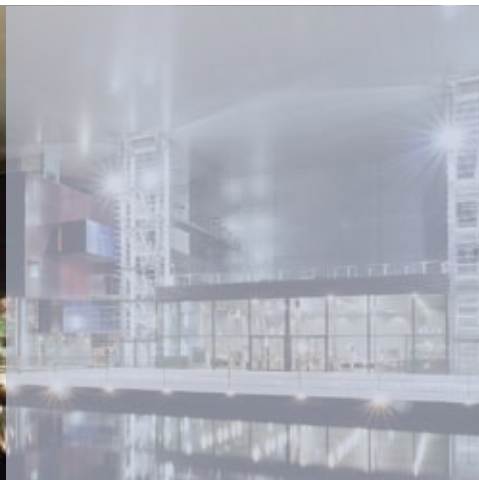
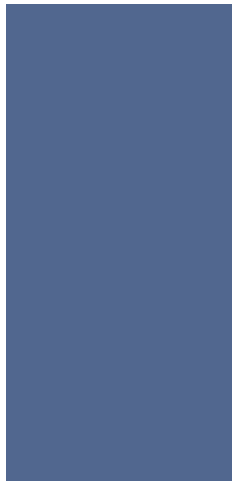
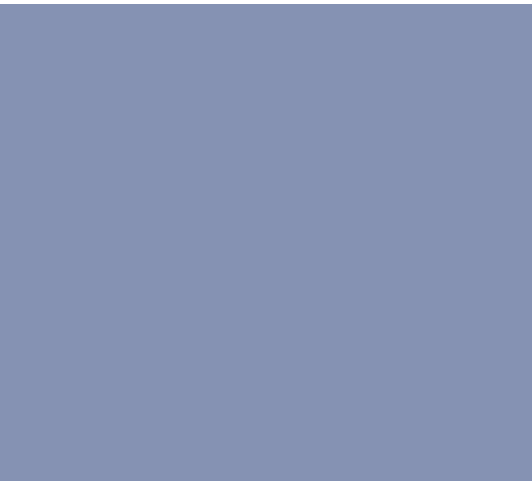
Lucerne can be reached via motorway from all major cities in Switzerland and neighboring counties on the A2 or A4 from Zurich. The hotels usually offer private parking and there is a parking lot under the KKL/Central station with about 1,000 parking spaces.

[www.viamichelin.ch](http://www.viamichelin.ch)

#### Examples of car travel times

Zurich – Lucerne	30 minutes
Basel – Lucerne	1 hour
Geneva – Lucerne	2 hours, 30 minutes
Milan – Lucerne	2 hours, 30 minutes
Stuttgart – Lucerne	2 hours, 45 minutes
Innsbruck – Lucerne	3 hours, 30 minutes
Frankfurt – Lucerne	4 hours





## REGISTRATION, GENERAL INFORMATION, LINKS

---

### CONGRESS FEE

---

**Early registration** € 480.–  
until January 31<sup>st</sup>, 2012

**Normal registration** € 530.–

**Students, university assistants,  
dental assistants** € 240.–

### CAMLOG PARTY

---

**Congress participants** € 110.–  
**Per accompanying person** € 110.–

(incl. boat trip, cogwheel train ride,  
bus transfer, catering)

### WORKSHOP

---

**Workshop** € 190.–  
(incl. transport, catering, materials)

### CONTINUING EDUCATION

---

The CAMLOG Congress program is CE-accredited. Attendance throughout the Congress will be credited with 13 CE hours. You will receive an additional 6 points for attending a workshop.

### CONGRESS VENUE

---

Culture and Congress Center Lucerne (KKL)  
Europaplatz 1  
CH-6005 Lucerne

### PATRONAGE

---

CAMLOG Foundation  
Margarethenstrasse 38  
CH - 4053 Basel  
congress@camlogfoundation.org  
www.camlogfoundation.org

### USEFUL LINKS

---

www.luzern.com  
www.kkl-luzern.ch  
www.lakelucerne.ch  
www.myswitzerland.com  
www.camlog.com

### TERMS AND CONDITIONS

---

Please, observe our general terms  
and conditions on page 30.

### REGISTRATION AND ACCOMMODATIONS

---

**KAD Kongress Agentur GmbH & Co. KG**  
Alpenblickstraße 6  
D-87477 Sulzberg  
phone +49 (0) 8376 975 63  
fax +49 (0) 8376 975 64  
e-mail camlog@kongressagentur.net







K.-L. Ackermann  
A. Kirsch  
G. Neuendorff

A. Happe  
A. Nolte

St. Wolfart  
V. Weber

F. Beuer  
M. Stimmelmayer  
J. Schweiger

# IMPLANT PROSTHETICS

DVD Compendium – new multimedia release\*

## FOUR TEAMS – THEIR CONCEPTS AND SOLUTIONS

Perfect in its conception, innovative in its approach, outstanding in its competence, efficient in its workflow and inspiring in its presentation, this unique educational platform for a successful collaboration between dental office and laboratory focuses on the optimization of the various dental implant treatment concepts, each in accordance with the diagnosis made. This compendium will consist of four volumes.

\*Grand premiere at the 4<sup>th</sup> International CAMLOG Congress, May 2012

A Quintessence International  
Publishing Group product



## HOTELS

Arrival date \_\_\_\_\_

Departure date \_\_\_\_\_

	<u>SINGLE ROOM</u>	<u>DOUBLE ROOM</u>
PALACE HOTEL *****	<input type="checkbox"/> CHF 420.- / € 323.- <sup>1</sup>	<input type="checkbox"/> CHF 560.- / € 431.- <sup>1</sup>
HOTEL SCHWEIZERHOF*****	<input type="checkbox"/> CHF 415.- / € 320.- <sup>1</sup>	<input type="checkbox"/> CHF 580.- / € 446.- <sup>1</sup>
HOTEL ASTORIA****	<input type="checkbox"/> CHF 290.- / € 223.- <sup>1</sup>	<input type="checkbox"/> CHF 350.- / € 269.- <sup>1</sup>
GRAND HOTEL EUROPE****	<input type="checkbox"/> CHF 280.- / € 215.- <sup>1</sup>	<input type="checkbox"/> CHF 340.- / € 261.- <sup>1</sup>
HOTEL CONTINENTAL-PARK*****	<input type="checkbox"/> CHF 250.- / € 192.- <sup>1</sup>	<input type="checkbox"/> CHF 330.- / € 254.- <sup>1</sup>
BEST WESTERN HOTEL ROTHHAUS***	<input type="checkbox"/> CHF 183.- / € 141.- <sup>1</sup>	<input type="checkbox"/> CHF 240.- / € 185.- <sup>1</sup>
HOTEL AMBASSADOR & DE LA PAIX***	<input type="checkbox"/> CHF 192.- / € 148.- <sup>1</sup>	<input type="checkbox"/> CHF 242.- / € 186.- <sup>1</sup>
HOTEL DREI KÖNIGE***	<input type="checkbox"/> CHF 176.- / € 135.- <sup>1</sup>	<input type="checkbox"/> CHF 220.- / € 169.- <sup>1</sup>

Rates are per room per night incl. VAT and breakfast. Please, note that the options on the limited quotas expire at the end of February 2012 and after this time, no guarantee of availability and price can be offered. Please, settle your hotel bill with the hotel directly and observe our General Terms and Conditions. City Tax not included.

<sup>1</sup> Underlying exchange rate: CHF 1 = € 0.77 (subject to change, Euro prices rounded and only for comparison. Hotel accomodation will be charged in the indicated CHF amounts)

## PAYMENT

Bank transfer      Kongress Agentur GmbH & Co.KG  
Raiffeisenbank Reutte  
ABA: 733 624 21 Acct. 8813 305  
IBAN: AT 26 36990 0000 8813 305  
BIC: RBRTAT 22

Visa      Credit card No. \_\_\_\_\_

Eurocard,  
MasterCard      Expiration \_\_\_\_\_

American  
Express      Cardholder \_\_\_\_\_

CVV Code

I hereby accept the General Terms and Conditions and upon payment by credit card, deduction of the total cost of registration from my credit card listed above.

Date \_\_\_\_\_

Signature \_\_\_\_\_

**Please, send the completed registration form to:**  
**fax: +49 (0) 8376 975 64**  
**e-mail: [camlog@kongressagentur.net](mailto:camlog@kongressagentur.net)**  
**or by mail to: KAD Kongress Agentur GmbH & Co.KG**  
**Alpenblickstraße 6, D-87477 Sulzberg**

## CONGRESS REGISTRATION FORM – CAMLOG CONGRESS 2012

---

### PERSONAL INFORMATION

Ms

Mr

Title \_\_\_\_\_

First name \_\_\_\_\_

Last name \_\_\_\_\_

Clinic / Practice / Company \_\_\_\_\_

Address \_\_\_\_\_

City / ZIP \_\_\_\_\_

Country \_\_\_\_\_

Phone \_\_\_\_\_

Fax \_\_\_\_\_

E-mail \_\_\_\_\_

### CONGRESS FEES

**Early registration** until January 31<sup>st</sup>, 2012 € 480.–

**Normal registration** € 530.–

**Students, university assistants, dental assistants** € 240.–  
(submit copy of ID)

### WORKSHOPS – THURSDAY

**Workshop I (English)** € 190.–

**Workshop II (English)** € 190.–

**Workshop III (German)** € 190.–

**Workshop IV (German)** € 190.–

### CAMLOG PARTY – FRIDAY

**Congress participant** € 110.–

**Accompanying person** € 110.–

Last name/First name \_\_\_\_\_

### PARTNER PROGRAM – FRIDAY

**Glasi Hergiswil** € 40.–

**“Façades tell Stories”, Guided City Walk** € 20.–

**The Sweet Temptation** € 20.–

Last name/First name \_\_\_\_\_

Last name/First name \_\_\_\_\_

### PARTNER PROGRAM – SATURDAY

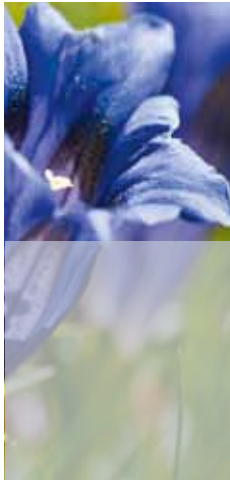
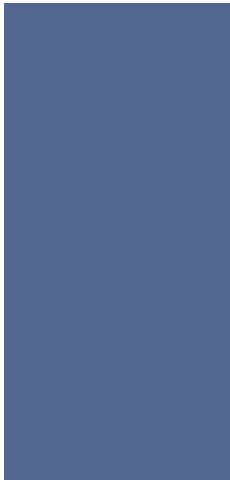
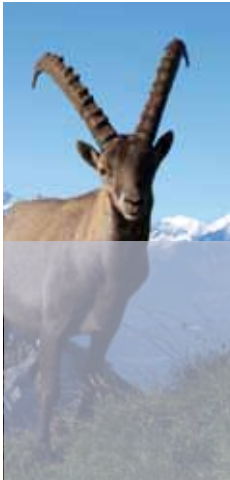
**Pilatus – Golden Roundtrip** € 80.–

**City walk/Rosengart** € 20.–

Last name/First name \_\_\_\_\_

Last name/First name \_\_\_\_\_

Please, note the detailed information on the previous pages. Prices per person incl. VAT



Subject to change: XJ5955.08/2011